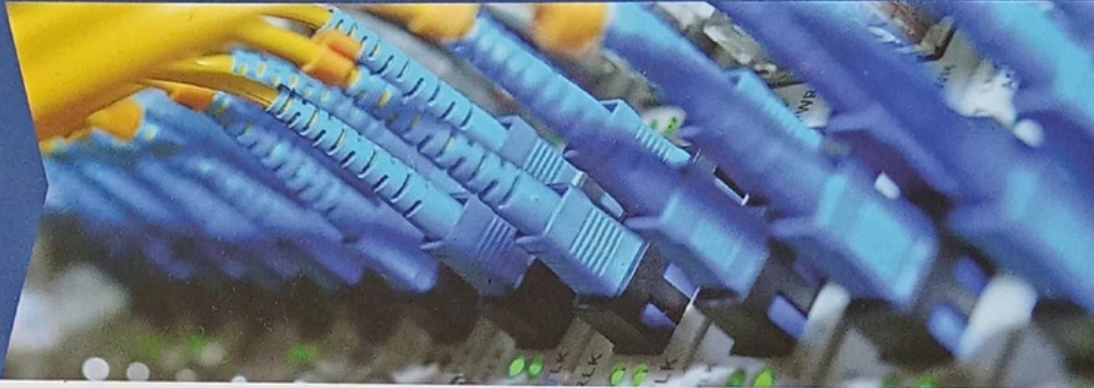


# CAT6 UTP - Data Cable

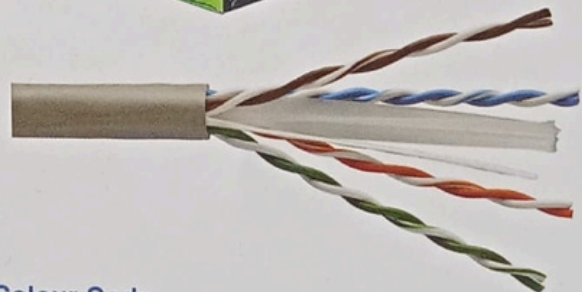
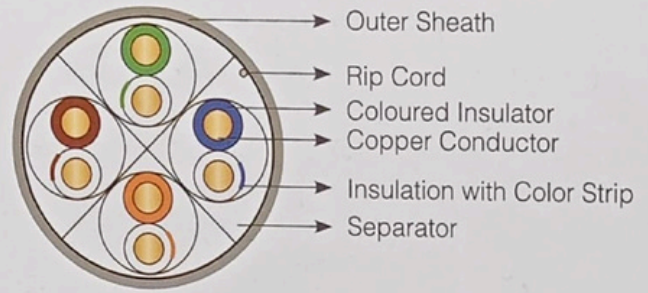


### Product Description

23 AWG copper wire insulated with Polyethylene. Two insulated conductors twisted together to form a pair and four such pairs separated by a cross filler form the core unit jacketed with flame retardant PVC. Enhanced performance cable enables delivering high speed network. They can transmit data at 1000mbps with a frequency of 250Mhz.

### Product Application

- 10 Base T (IEEE 802.3)
- 100 Base T (IEEE 802.3U)
- 1000 BASE-T (IEEE 802.3ab)
- 1000 BASE-TX
- TP-PMD (ANSI X3T9.5)
- 100 Mbps CDDI
- ATM 155
- 4/16 Mbps Token Ring (IEEE 802.5)
- Meets IEEE802.3af & 802.3at PoE



### Product Specification

#### Electrical & Mechanical Characteristics

Characteristic	Specifications
Core Conductor	Solid Bare Copper (23AWG)
Insulation Material	High Density Polyethylene
Core OD	0.98mm Norminal
Sheathing Thickness	0.7mm Norminal
External Color	6.2 Norminal
Sheathing Color	Grey
Weight	15Kg For 305Mtr box
Maximum Tensile Load	110 N (Installation)
Minimum Bend Radius	4 x cable outer diameter
Temperature	0° to + 50°C (Installation) 10° to + 60°C (operation)
Specification Standard	IEC 61156-5

#### Colour Code

Pair	Specifications
1	Blue - White Blue
2	Orange - White Orange
3	Green - White Green
4	Brown - White Brown

## Transmission/Characteristics - 100m

Frequency (Mhz)	Insertion loss (dB/100m)	RL (dB)	NEXT (dB)	PSNEXT (dB)	ELFEXT (dB)	PSELFEXT (dB)	ACR (dB)
1	2.0	20.0	74.3	72.3	67.8	64.8	72.3
4	3.8	23.0	65.3	63.3	55.8	52.8	61.5
8	5.3	24.5	60.8	58.8	49.7	46.7	55.5
10	6.0	25.0	59.3	57.3	47.8	44.8	53.3
16	7.6	25.0	56.2	54.2	43.7	40.7	48.6
20	8.5	25.0	54.8	52.8	41.8	38.8	46.3
25	9.5	24.3	53.3	51.3	39.8	36.8	43.8
31.25	10.7	23.6	51.9	49.9	37.9	34.9	41.2
62.5	15.4	21.5	47.4	45.4	31.9	28.9	32.0
100	19.8	20.1	44.3	42.3	27.8	24.8	24.5
200	29.0	18.0	39.8	37.8	21.8	18.8	10.8
250	32.8	17.3	38.3	36.3	19.8	16.8	5.5

## Electrical Properties @20 deg C

Characteristics	Specifications
Characteristic Impedance	100+/- 15 Ohms /100m
Conductor Resistance	Max < 9.38 Ohms/100m
Conductor Resistance Unbalance	Max 5%
Mutual Capacitance	5.6nF/100m
Delay Skew	Max 45 ns/100m
Propogation Delay	< 536 ns/100m @ 250MHz

Packaging
305M - Reel in a box
100m/500m/1000m - Reel

## Contacts:



### FACTORY

Old Mombasa Road, Near Syokimau Railway Station, Mombasa Road.  
P.O Box 18778, 00500, Nairobi, Kenya.  
Mobile: 0719 767149/0735 433-358  
Email: info@ascables.co.ke  
Website: www.ascables.co.ke

### SHOWROOM

Lusaka Rd, Industrial Area, Nairobi, Kenya  
Mobile: 0719-767-149, Email: sales@ascables.co.ke